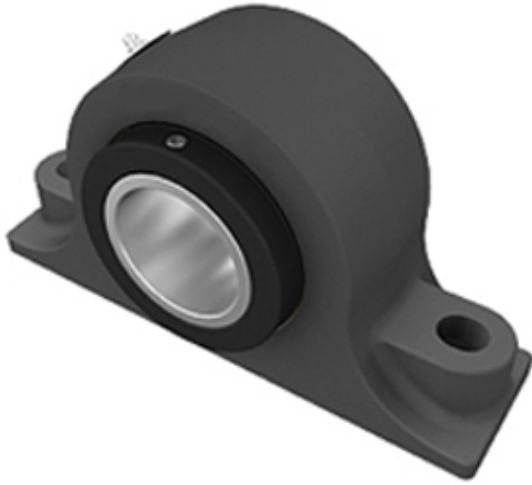




BEARING DRIVESHAFT, INC.

2.953 Inch | 75 Millimeter x 4.5 Inch | 114.3 Millimeter x 3.126 Inch | 79.4 Millimeter TIMKEN E-P2B-TRB-75MM Pillow Block Bearings



E-P2B-TRB-75MM Bearing 2D drawings and 3D CAD models

Bearing No. E-P2B-TRB-75MM

Category	Pillow Block Bearings
Inventory	0.0
Manufacturer Name	TIMKEN
Minimum Buy Quantity	N/A
Weight	12.416
EAN	0053893775500
Product Group	M06288
Number of Mounting Holes	2
Mounting Method	Concentric Collar
Housing Style	2 Bolt Pillow Block
Rolling Element	Tapered Roller Bearing
Housing Material	Cast Iron
Expansion / Non-expansion	Non-expansion
Mounting Bolts	3/4 Inch
Relubricatable	Yes
Seals	Double Lip Radial
Housing Configuration	1 Piece Solid
Inch - Metric	Metric
Other Features	Double Row Wide Inner Race With Set Screw
Long Description	2 Bolt Pillow Block; 75MM Bore; 79.4MM Base to Center Height; Concentric Collar Mount; Tapered Roller Bearing; 236.54MM Minimum Bolt Spacing; 246.075MM Bolt Spacing



BEARING DRIVESHAFT, INC.

	Maximum; Relubricatable; Cast Iron;
Category	Pillow Block
UNSPSC	31171511
Harmonized Tariff Code	8483.20.40.80
Noun	Bearing
Keyword String	Pillow Block
Manufacturer URL	http://www.timken.com
Manufacturer Item Number	E-P2B-TRB-75MM
Weight / LBS	29
D	4.5 Inch 114.3 Millimeter
B	3.126 Inch 79.4 Millimeter
Bolt Spacing Maximum	9.688 Inch 246.075 Millimeter
Nominal Bolt Center to Center	9.5 Inch 241.3 Millimeter
Bolt Spacing Minimum	9.313 Inch 236.54 Millimeter
Actual Bolt Center to Center	0 Inch 0 Millimeter
d	2.953 Inch 75 Millimeter
Shaft Size	2.953 in
Shaft Size Type	Metric
Weight	29 lb
UPC Code	053893775500
Dimension B	4-1/2 in
Dimension L	12 in
Dimension A	3 in
Dimension J Min.	9-5/16 in
Dimension J Max.	9-11/16 in
Bolt Diameter	3/4 in
Dimension N	27/32 in
Dimension N ₁	1 in
Dimension H ₁	1-7/8 in



BEARING DRIVESHAFT, INC.

Dimension H ₂	6-1/4 in
Dimension d ₁	4-23/32 in
Dimension H	3-1/8 in
e	0.46
X (if F _a /F _r ≤ e)	0.87
Y (if F _a /F _r ≤ e)	1.87
X (if F _a /F _r > e)	0.7
Y (if F _a /F _r > e)	2.26
K Factor	1.30
C ₉₀ Dynamic Load Rating ¹	12300 lb
C ₀ Static Load Rating	61200 lb
F _{a-max} Maximum Permissible Thrust Load ²	5181 lb
F _{r-max} Maximum Allowable Slip Fit Radial Load ³	10000 lb
Max. Speed ⁴	2060 rpm
Note	Note: All units have a 1/8 pipe thread grease fitting The Maximum Permissible Thrust Load applies to conditions of slip fit with set screw mounting or in applications where a large moment loading occur