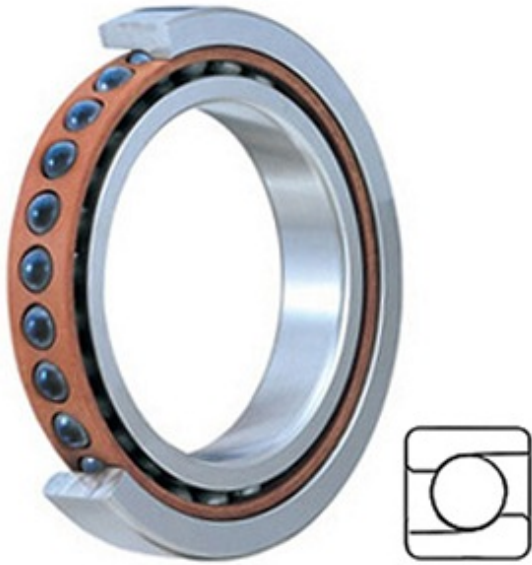




# BEARING DRIVESHAFT, INC.



B/VEX100/NS7CE3UL Bearing 2D drawings and 3D CAD models

3.937 Inch | 100 Millimeter x 5.906 Inch | 150 Millimeter x 0.945 Inch | 24 Millimeter SKF B/VEX100/NS7CE3UL Precision Ball Bearings

Bearing No. B/VEX100/NS7CE3UL

Category	Precision Ball Bearings
Inventory	0.0
Manufacturer Name	SKF
Minimum Buy Quantity	N/A
Weight	0
Product Group	B04270
Enclosure	Open
Precision Class	ABEC 7   ISO P4
Material - Ball	Ceramic
Number of Bearings	1 (Single)
Contact Angle	25 Degree
Preload	Light
Raceway Style	1 Rib Inner Ring and Outer Ring
Cage Material	Phenolic
Rolling Element	Ball Bearing
Mounting Arrangement	Universal
Flush Ground	Yes
Inch - Metric	Metric
Other Features	Single Row   Angular Contact
Long Description	100MM Bore; 150MM Outside Diameter; 24MM Width; Open Enclosure; ABEC 7   ISO P4 Precision; Ceramic Ball Material; 1 (Single) Bearing; 25 Degree



## BEARING DRIVESHAFT, INC.

	Contact Angle; Phenolic Cage Material; 1 Rib Inner Ring
Category	Precision Ball Bearings
UNSPSC	31171531
Harmonized Tariff Code	8482.10.50.28
Noun	Bearing
Keyword String	Ball Angular Contact
Manufacturer URL	<a href="http://www.skf.com">http://www.skf.com</a>
d	3.937 Inch   100 Millimeter
B	0.945 Inch   24 Millimeter
D	5.906 Inch   150 Millimeter